



DIELECTRIC FILTER SAMPLE SPECIFICATION

 Part No.: **DDP0810R725-780P045B**

Customer:

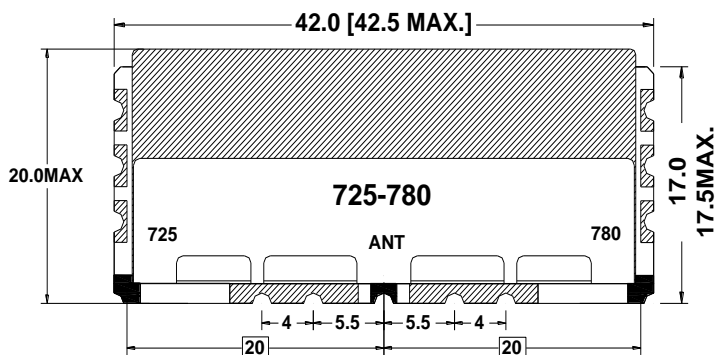
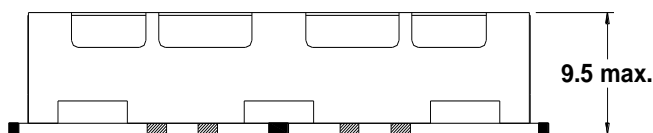
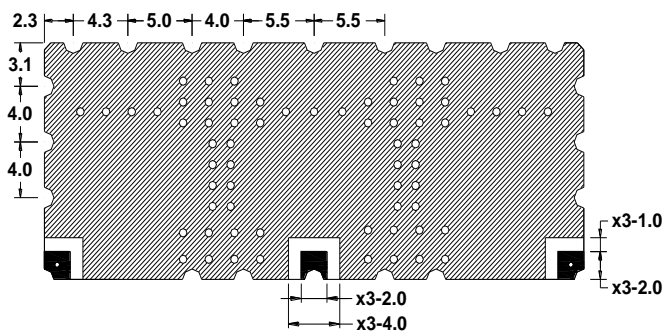
 Date: **2020-2-21**

Written by	Checked by	Approval

ELECTRICAL SPECIFICATIONS

ITEM	Low >>> ANT	High <<< ANT	UNIT	
1	Center Frequency[fo]	725	780	MHz
2	Bantwidth[BW]	fo ±22.5	fo ±22.5	MHz
3	Insertion Loss in BW	3.5 max.	3.0 max.	dB
4	Ripple in BW	2.3 max.	2.0 max.	dB
5	VSWR in BW	1.5:1 max	1.5:1 max	Ratio
6	Attenuation [Absolute Value]	45.0 min. @ [758~803] MHz	45.0 min. @ [703~748] MHz	dB
7	Input Power	3.0 max.		W
8	In/Out Impedance	50		Ω
9	Operation Temperature Range	-40 to +85		°C

MECHANICAL SPECIFICATIONS

TOP VIEW

BOTTOM VIEW


I/O PORT

GROUND

TOLERANCE : ± 0.20

UNIT : mm

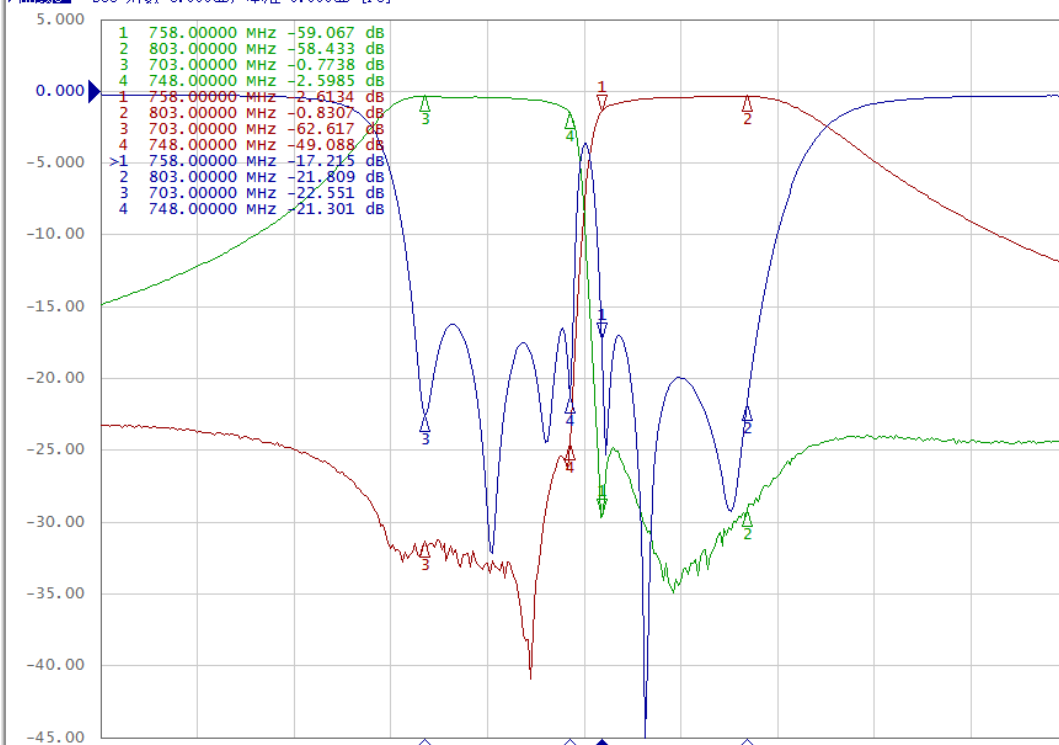
CHARACTERISTIC CURVE

TD3619C 矢量网络分析仪

1 当前通道/曲线 2 响应 3 激励源 4 频标/分析 5 仪器状态

Resize

曲线1: S13 对数 10.00dB/ 基准 0.000dB [F3]
 曲线2: S43 对数 10.00dB/ 基准 0.000dB [F3]
 曲线3: S33 对数 5.000dB/ 基准 0.000dB [F3]



1 Center 752.5 MHz

IFBW 70 kHz

带宽 300 MHz Cor

测量 终止 外基准 服务

2020-10-19 14:21

清除频标
菜单

全部关闭

频标 1

频标 2

频标 3

频标 4

频标 5

频标 6

频标 7

频标 8

频标 9

基准频标

返回